

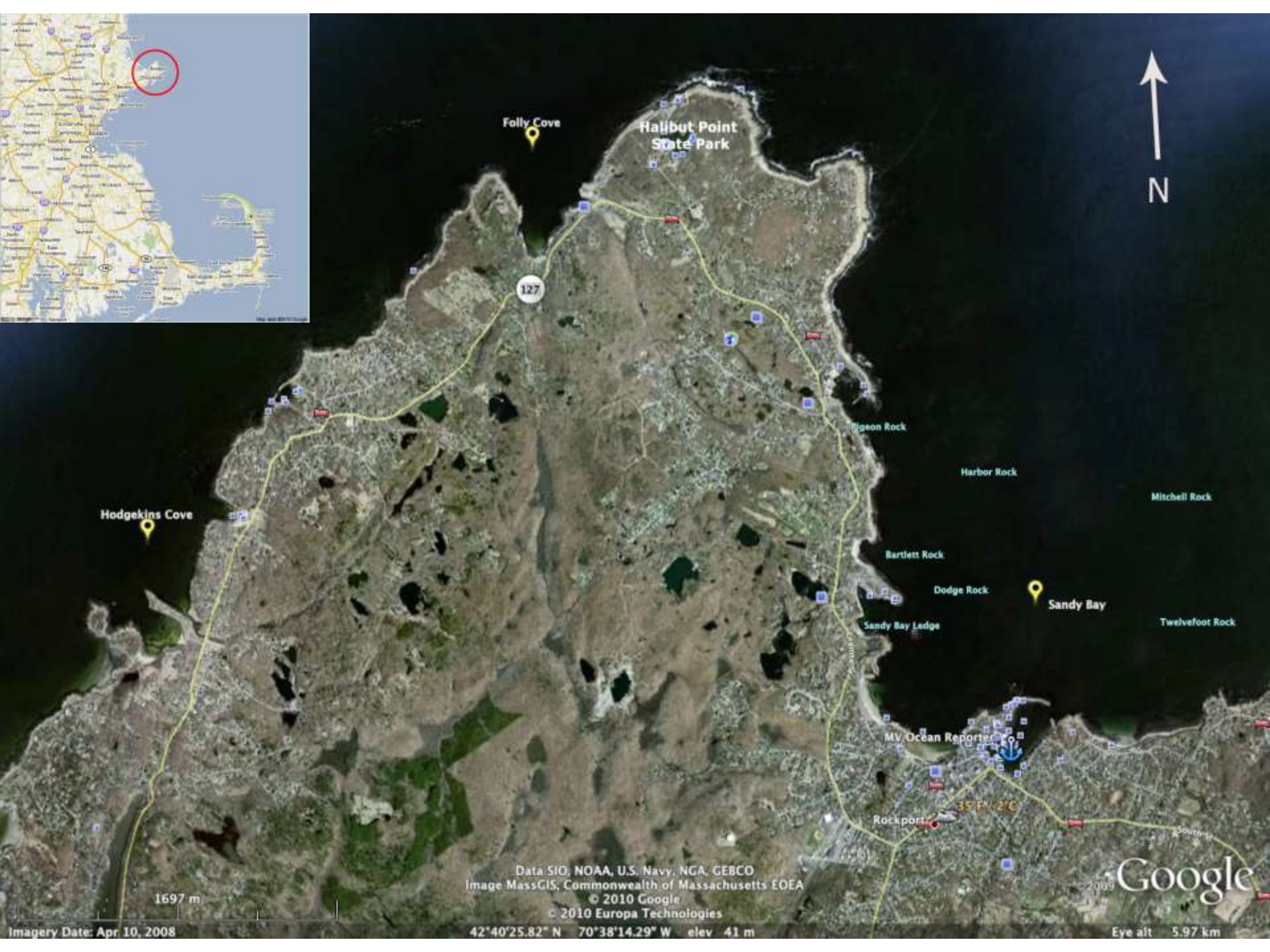
# MUSSEL CULTURE ON LONG LINES ON CAPE ANN, MASSACHUSETTS – AN UPDATE

Ted Maney, Mark Fregeau, Joseph K. Buttner,  
Scott Weston and Bill Lee, Northeastern  
Massachusetts Aquaculture Center and  
Department of Biology, Salem State College,  
Salem, MA 01970



# Blue Mussels, *Mytilus edulis*





Data SIO, NOAA, U.S. Navy, NGA, GEBCO  
Image MassGIS, Commonwealth of Massachusetts EOE  
© 2010 Google  
© 2010 Europa Technologies

Google

Imagery Date: Apr 10, 2008

42°40'25.82" N 70°38'14.29" W elev 41 m

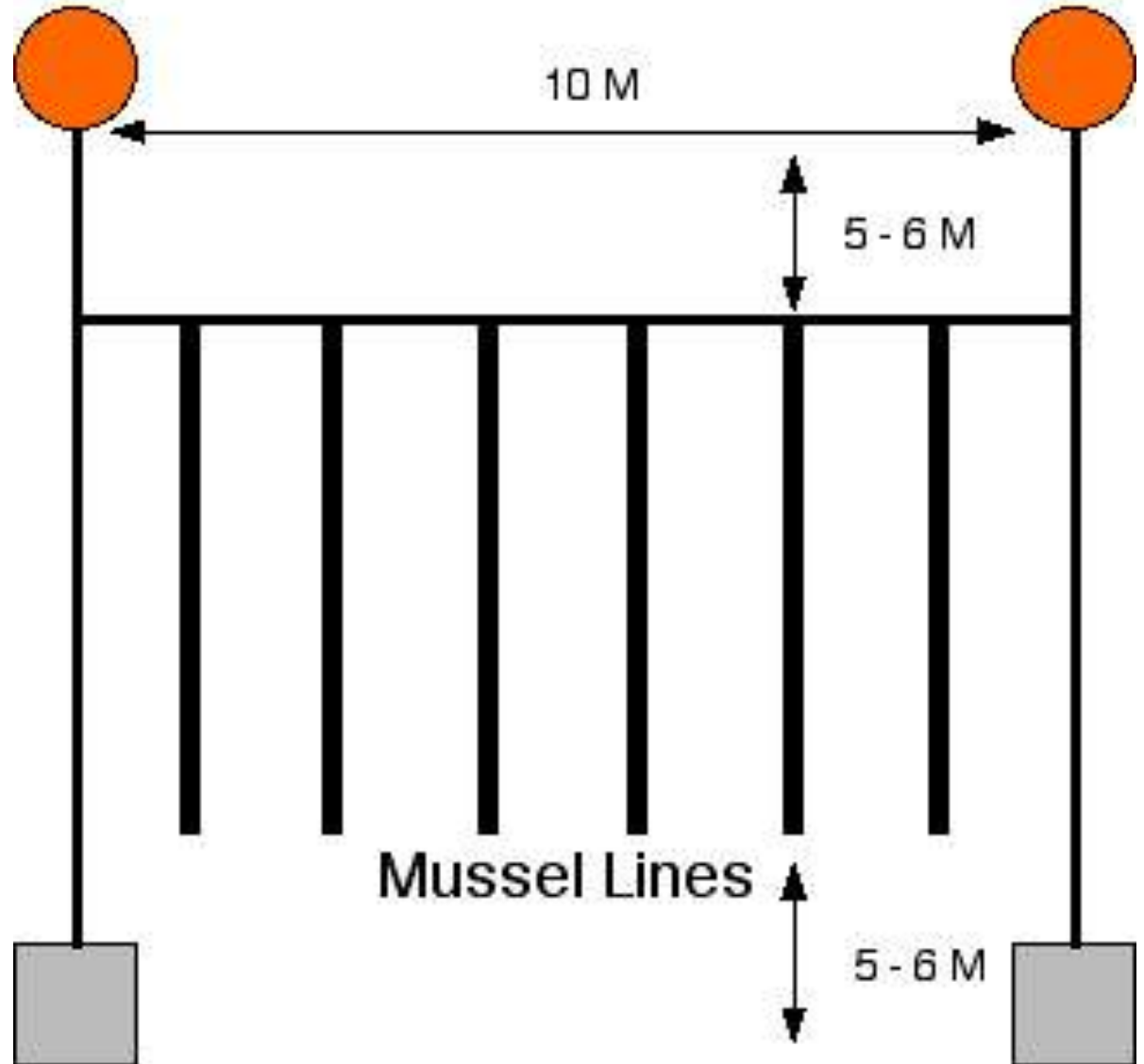
Eye alt 5.97 km

# 3 - Long Line Cultures Established

- Hodgkin's Cove, Gloucester, MA (2006)
  - 10M depth, 6 – 5M lines
- Folly Cove, Rockport, MA (2007)
  - 20M depth, 6 - 10M lines
- Sandy Bay, Rockport, MA (2007)
  - 20M depth, 6 - 10M lines

# Mussel Long-Line Culture Setup

- Mussels were socked onto “fuzzy” rope
- Socked lines secured to cross lines by divers
- Split chain links for line attachment



Fuzzy Mussel Rope



Split chain link for quick attachment to header lines

Socked Mussel Rope







# Socked Mussels on Lines





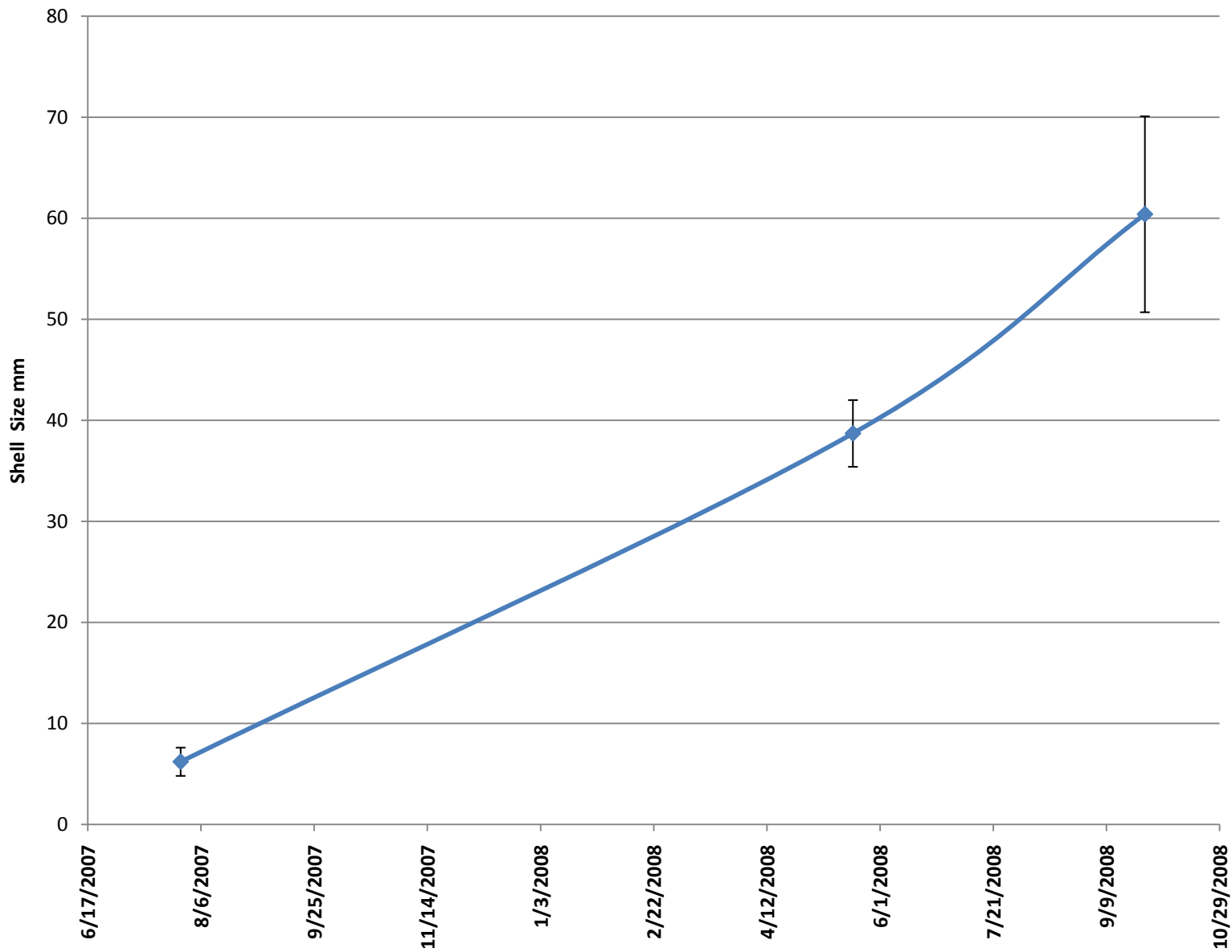
# Monitoring Mussel Lines



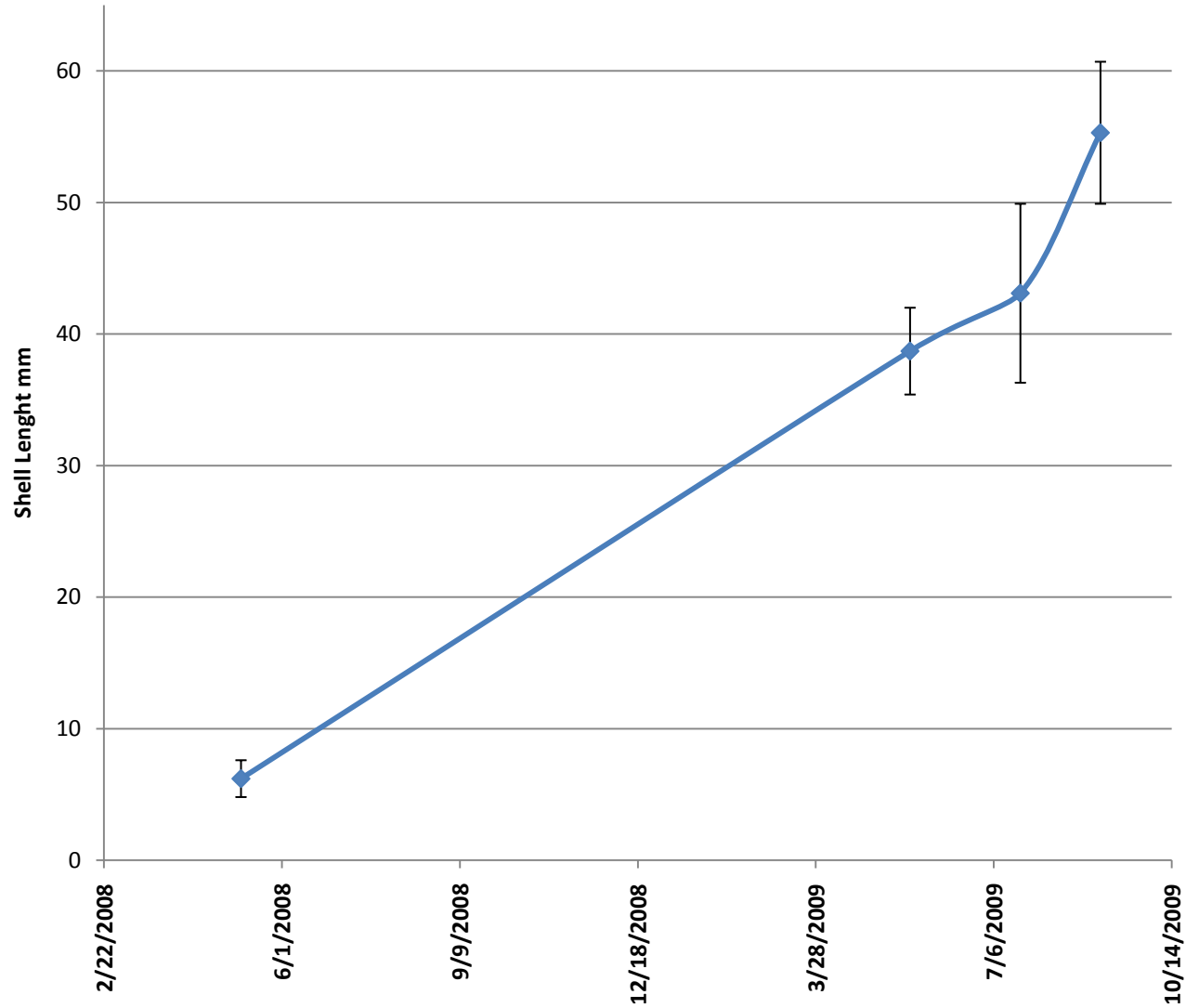
# Measuring Mussel Growth



# Mussel Growth off Cape Ann, Hodgkins Cove



# Mussel Growth off Cape Ann, Sandy Bay



# Growing Time to Harvest

Harvest size: 55 mm

## Culture Time

(months)

Prince Edward Island

19-22

Quebec

23-24

Maine

18-24

Isle of Shoals

12-15

Cape Ann

11-14

Source: UNH Shellfish Culture Report , 2000



## New Fishery for the Gloucester Fleet



# Future Plans

- Refine seed collection and socking procedures
- Develop an deep water site
- Expand outreach efforts with local fishers
- Work on permitting issues